



M.P.A. medical partners
complex solutions

«M. P. A. medical partners»

Ecosystem medical solutions



We have created an ecosystem for healthcare facilities where our company covers all the needs of a clinic at any stage of its development.

Engineering

Complex engineering
Cleanroom modules
Turnkey construction

Equipment

Comprehensive equipment
High-tech equipment
Digital solutions

Service

Comprehensive technical service
Repair of medical equipment

Education

Training Centre
Trainings and lectures
Patient schools

Promotion

Digital marketing
Organisation of broadcasts
Photo and video

 mpamed.ru/uslugi

 mpamed.ru/catalog

From Moscow

to Vladivostok

500+ employees

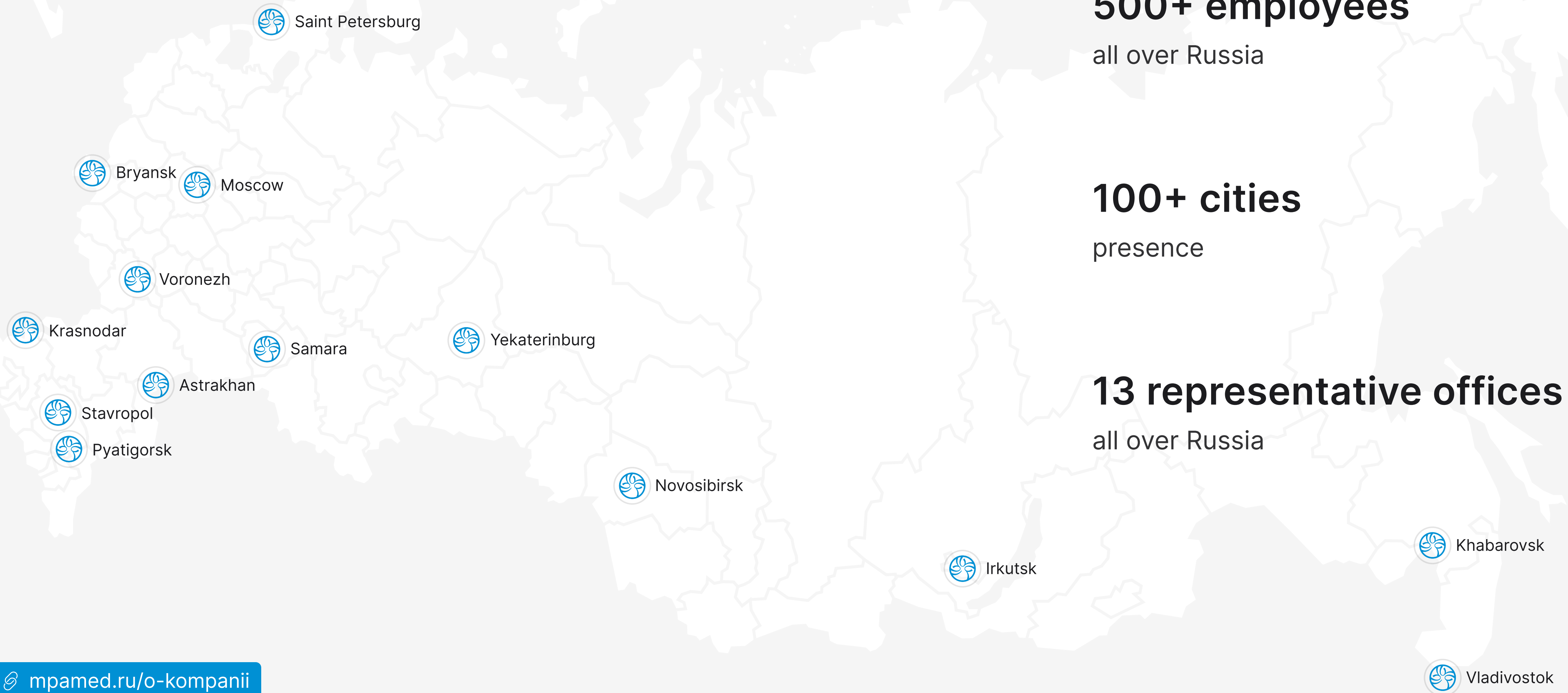
all over Russia

100+ cities

presence

13 representative offices

all over Russia



«M. P. A. medical partners»

Official representative in Russia:



Atos

Voice and respiratory
rehabilitation after laryngectomy

bk medical 
a GE Healthcare company

Ultrasound-based imaging
systems for surgical physicians

INTUITIVE™

da Vinci robot-assisted surgical
systems

Laborie™

Equipment for diagnosis and
treatment of urinary
incontinence

DERMA
MEDICAL

Digital epiluminescence
microscopy and skin image
transfer

 **ELITE BAGS**

Professional bags for medical,
emergency services, military
medics, firefighters

 **TECNO-GAZ**
industries

Aspirators and pre-sterilisation
equipment

ropimex®

Visual security systems for
medical rooms and wards

 **edap tms**
Bringing New Horizons to Therapy

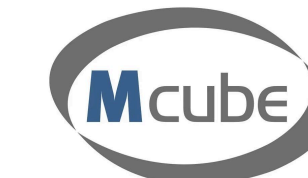
Minimally invasive medical
devices using ultrasound
technology

Promedon 
People + Innovation

Pelvic organ prolapse treatment,
TMD, testicular prostheses

 **Riester**

Binocular loupes, otoscopes,
ophthalmoscopes, laryngoscopes,
tonometers, stethoscopes, etc.

 **Mcube**

Urinary incontinence diagnostic
devices, 3D ultrasound bladder
diagnostic devices

«M. P. A. medical partners»



65+ manufacturers in the portfolio

ASP Advanced
Sterilization
Products

B | BRAUN

Boston
Scientific

 **BRAINLAB**

Canon

 **Coloplast**

 **CONMED**

ZEISS

Daavlin
Let's Be Clear

Dräger

erbe
power your performance.

EXO ATLET

 **GE Healthcare**

HT GROUP 

I P G
IRE-POLUS

Johnson & Johnson
MEDICAL DEVICES COMPANIES

mindray

STORZ
KARL STORZ — ENDOSKOPE

LOJER

 **mocom**
STERILIZATION FIRST

Medtronic

 **M E D E R E N**

 **mz Liberec**

 **MERIVAARA**

PENTAX

PHYSIOMED
TECHNOLOGY FOR THERAPY

STORZ MEDICAL

 **TRACOE**

 **TECNO-GAZ**
industries

 **TUR**

Engineering.

Technical solutions



Designing

Design, pre-project preparation, development of design projects, and approval of project solutions with state supervisory, coordinating, and expert bodies.

Internal utilities

Heating systems, ventilation, air conditioning, power supply, hot and cold water supply, sewage, automation, security and fire alarm systems, video surveillance, smoke extraction, etc.

External utilities

Design of external engineering networks: heating, electrical, outdoor lighting, water supply, sewage, and low-voltage networks.

Reconstruction

Reconstruction, major repairs, and installation of engineering networks in existing medical, veterinary, and pharmaceutical facilities.

Engineering.

«Clean rooms» modules

«Clean rooms» modules are specialized structural and technological modules built into the existing premises of a medical institution and ensuring the fulfillment of normative sanitary, microbiological and climatic requirements determined by the conditions and technology of the treatment process.

It consists of:

Complex of engineering systems

Integrated into the elements of enclosing structures, providing the required technological processes and the required class of cleanliness;

Enclosing structures

Self-supporting partitions with built-in elements (doors, glazing, transmission windows, etc.);

Sealed suspended ceiling

Cassette ceiling with recessed lighting fixtures, air distribution systems;

Floor covering

Antistatic linoleum, complete with welding cord and connelure profile with a factory on the wall.

Engineering. Projects

Scientific and Educational Center for Innovative Biomedical Technologies RUDN University

📍 Moscow

The 4-story educational building includes a veterinary clinic with a dedicated training section and a scientific vivarium. It is located on the premises of RUDN University and is designed to accommodate 1,200 students.

Area:

- 9600 m²

Types of work:

- General design agreement;
- Expert examination;
- The project includes medical equipment from M.P.A.'s portfolio.







«Volgograd Regional Clinical Oncological Dispensary»



📍 Volgograd

Module

Consisting of:

- Surgical department with 6 operating rooms;
- Resuscitation unit for 14 beds;
- Intensive care rooms (pediatric / 6 beds, hematology / 6 beds);
- Histology lab;
- Paid department (children, adults);
- Auxiliary rooms.

Area


- Clean rooms – 1635,7 m²

Types of work:

- Comprehensive design;
- Obtaining approval in the register of expenditure commitments;
- Preparation of premises for the installation of a climate-controlled module for «clean rooms» installation work and finishing work;
- Supply and installation of a climate-controlled medical module;
- Supply and integration of telemedicine equipment.



Infectious disease building of the Children's Regional Clinical Hospital (Khabarovsk)

 Khabarovsk

Consisting of:

- Reception department with reception-examination and Meltzer boxes;
- Department of intestinal infections for 45 beds;
- Two departments of airborne infections for 34 and 45 beds;
- Intensive care unit for 6 beds;
- Clinical diagnostic laboratory;
- Radiology department;
- Pharmacy.

Area:

- 16 469 m²

Types of work:

- General design agreement;
- Supervision;
- The project includes medical equipment from M.P.A.'s portfolio.







Medical Research and Education Center of Moscow State University named after M.V. Lomonosov (Moscow)



📍 Moscow Module + Integration

Consisting of:

- 2 angiographic operating rooms;
- 2 awakening rooms with 6 beds;
- 2 preoperative rooms;
- Auxiliary rooms.

Area:

- 900 m²

Types of work:

- Integrated design (medical technology, planning solutions, engineering systems);
- Development of working documentation;
- Preparing premises for the installation of a medical air-conditioned module for «clean» rooms, installation works (engineering networks, systems), finishing works;
- Supply and installation of medical climactic module;
- Delivery of equipment for telemedicine and its integration into the Medical module;
- The «M.P.A. medical partners» central office supplies medical equipment – angiographs, consoles, operating lamps, etc.



Clinical Hospital «RZD-Medicine» named after N. A. Semashko (Moscow)

📍 Moscow Module + Integration

Consisting of:

- Operating room on 2 floors of the surgical building with 13 operating rooms: eye microsurgery, 2 general surgery, gynecological; neurosurgical, urological, emergency, purulent, 2 otolaryngological and small operating rooms;
- 2 awakening chambers;
- 3 anesthesia rooms;
- 7 preoperative rooms;
- Auxiliary rooms.

Types of work:

- Integrated design;
- Obtaining approval;
- Preparation of premises for the installation of the «clean» rooms module, installation works (engineering networks and systems), finishing works;
- Supply and installation of medical climactic module;
- Integrated Karl Storz OR1 operating system;
- Supply of medical equipment by the Central Office of M.P.A. – operating tables, consoles, surgical lights, etc.







Russian scientific center of surgery named after academician B.V. Petrovsky



 Moscow **Module + Integration**

Consisting of:

- 2 Angiographic hybrid operating rooms with control rooms;
- 11 general-purpose operating rooms;
- 2 awakening rooms with 12 beds;
- 13 preoperative rooms;
- Auxiliary rooms.

Types of work:

- Integrated design for the 11th floor (medical technology, planning solutions, X-ray protection, engineering systems);
- Expert examination together with the general designer;
- General construction works, installation works engineering networks and systems), finishing works;
- Supply and installation of a climate-controlled medical module;
- Supply of equipment for integrated operating rooms by Karl Storz and Olympus in conjunction with a medical climate-controlled Module;
- Supply of medical equipment by the Central Office of M.P.A. as part of the MPA-Engineering project.





Designing. Preparation and development

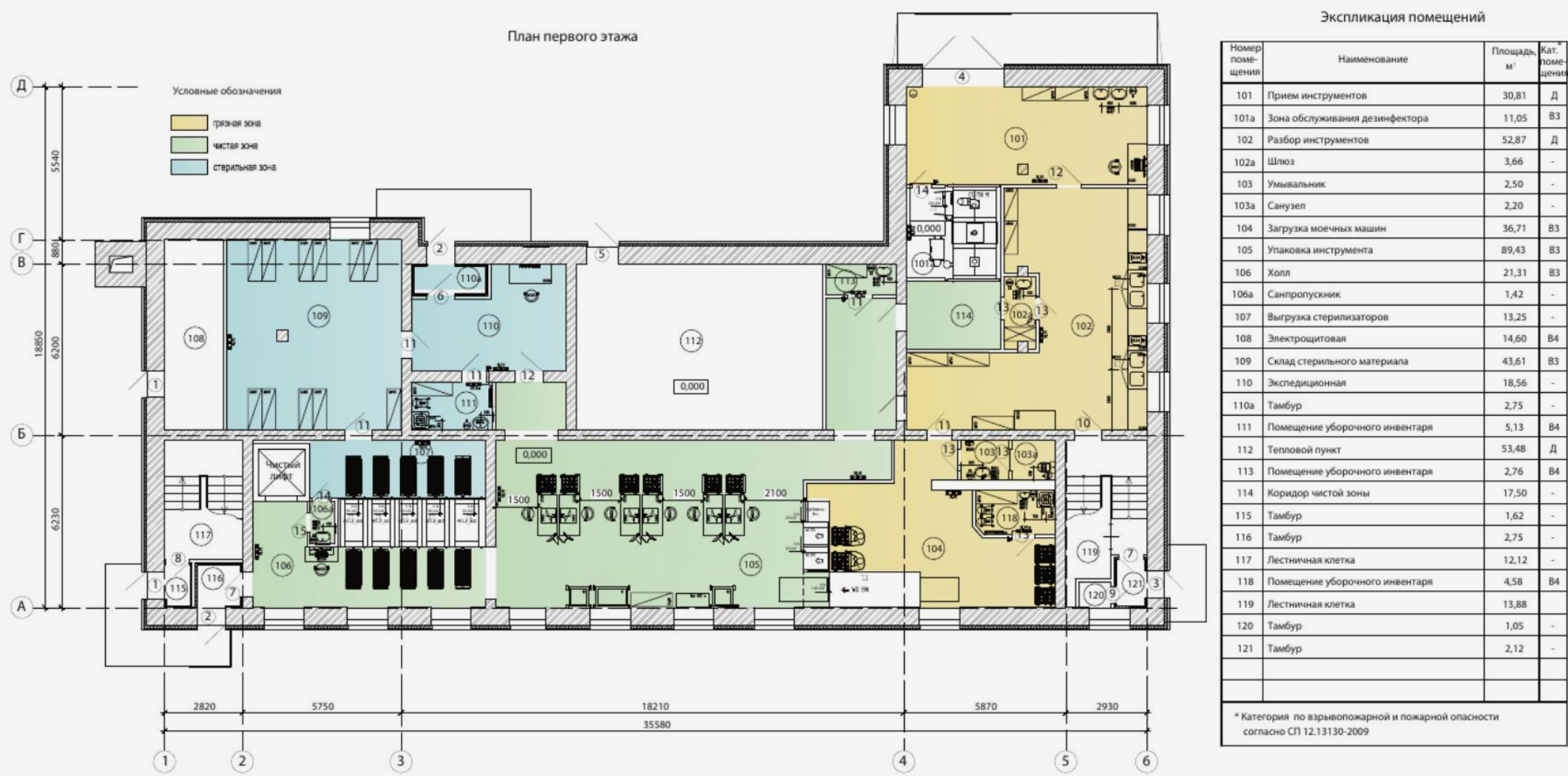
Design, pre-project preparation, development of design projects, approval of design solutions in state, supervisory, approving and expert bodies.

The opportunity to order both complex (general) design and individual sections of the project documentation.

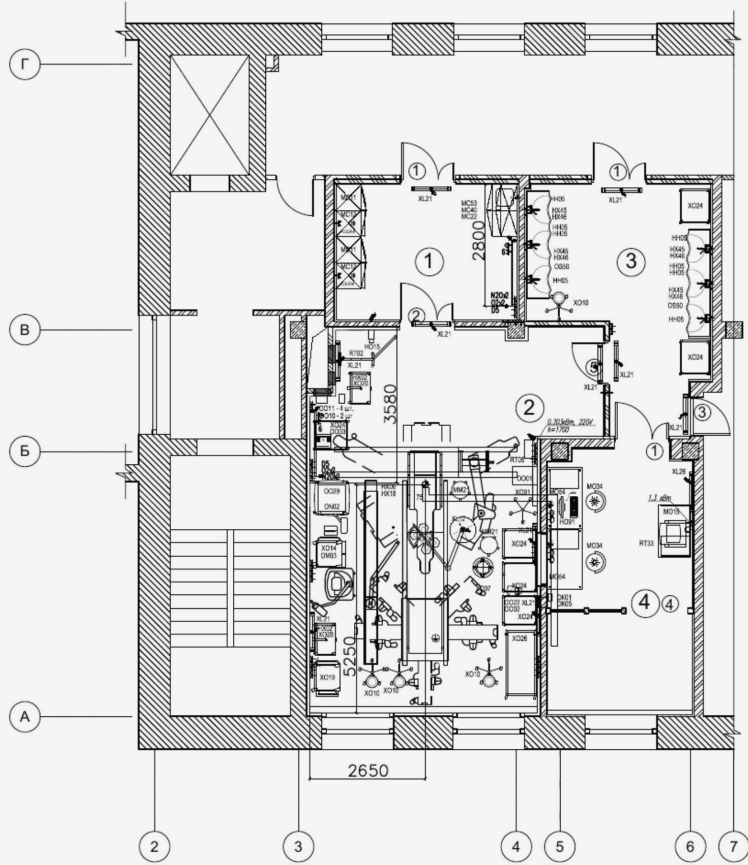
Design stages:

1. Development of technical and medical-technological task
2. Formation of the concept
3. Justification
4. Selection of equipment, furniture and supplies
5. Development of project and working documentation
6. Timing planning

Central Sterilization Department for «Cotton Way» LLC



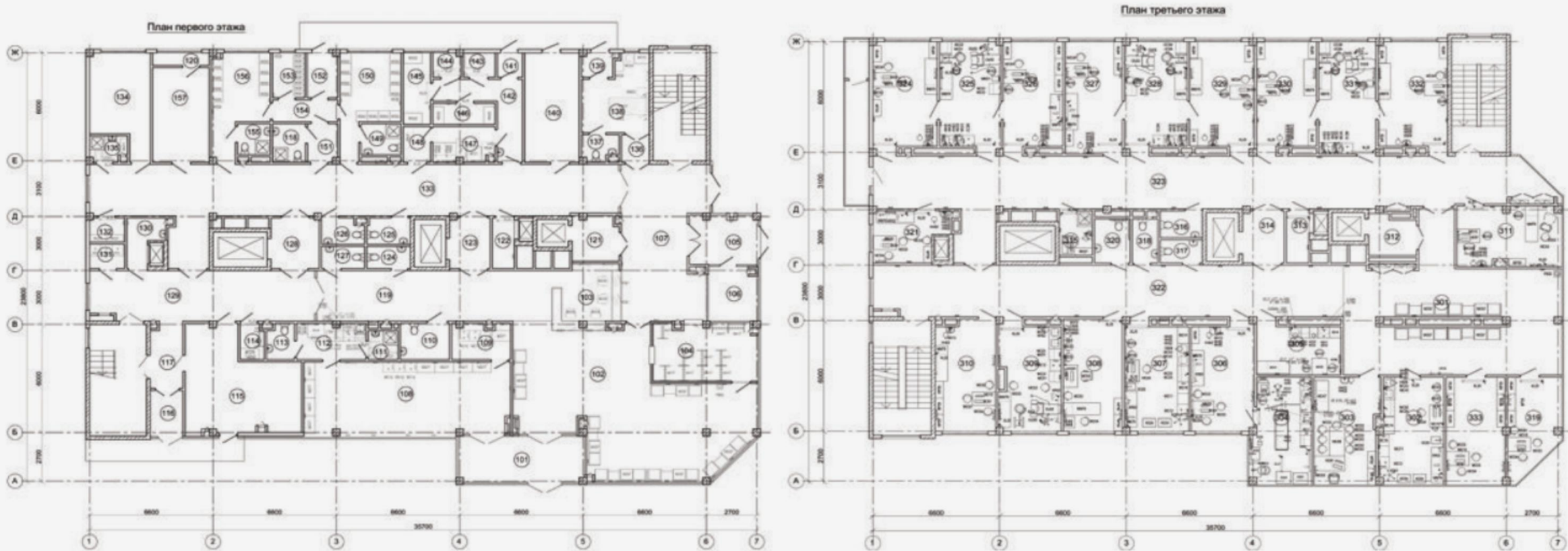
Zhukovsky Regional Clinical Hospital (Moscow region). Operating room



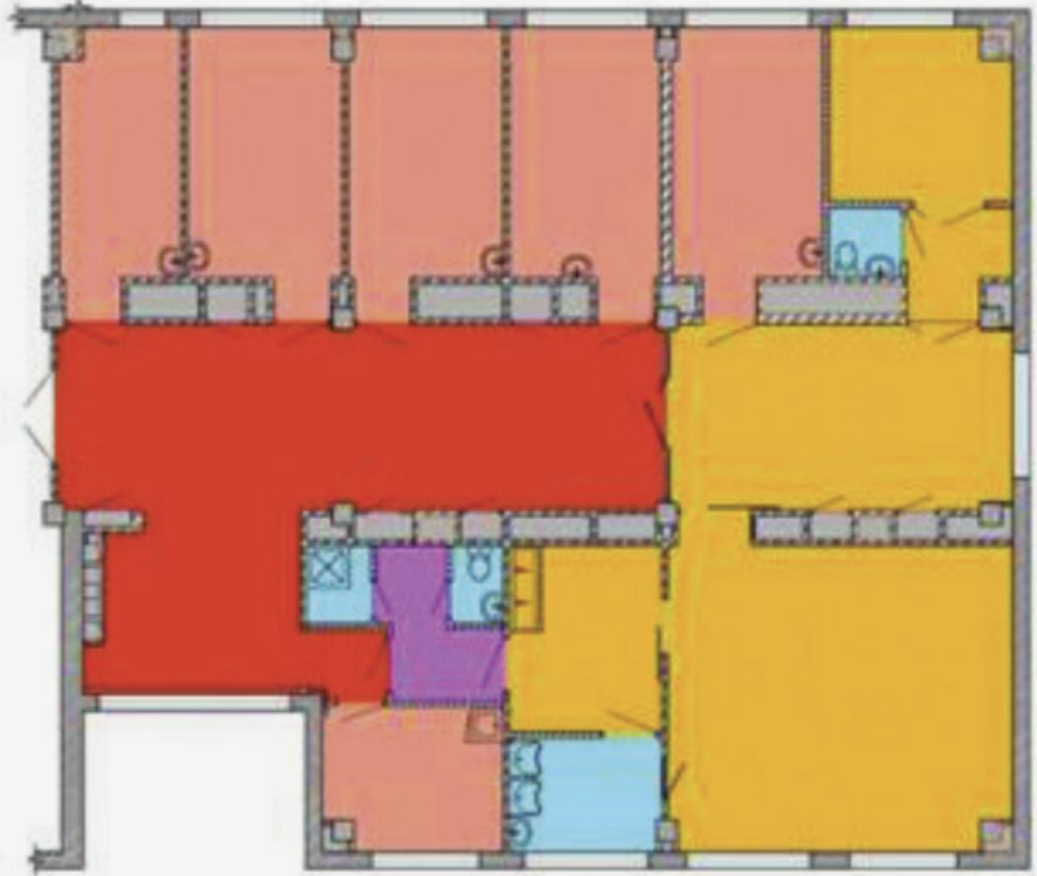
УСЛОВНЫЕ ОБОЗНАЧЕНИЯ

| Графическое изображение | Наименование | Высота установки от УМГ, мм | Примечание |
|-------------------------|--|---|------------|
| | Розетка компьютерной сети (RJ45) | 1100 - для обозначенных * 300 - для всех остальных | утиль. ОСТ |
| | Розетка городской телефонной связи | 1100 - для обозначенных * 300 - для всех остальных | утиль. ОСТ |
| | Розетка местной телефонной связи (от АТС) | 1100 - для обозначенных * 300 - для всех остальных | утиль. ОСТ |
| | Розетка штепсельная с цилиндрическими контактами и заземляющим контактом (п - количество розеток) Ру (одной розетки) = 1 кВт, 220 В, 1ф. ток + N + РЕ | 1100 - для обозначенных * 300 - для всех остальных | утиль. ЗО |
| | Клемма защитного заземления | | утиль. ЗО |
| | Электрическое подключение - оставить концы 1,5м | | утиль. ЗО |

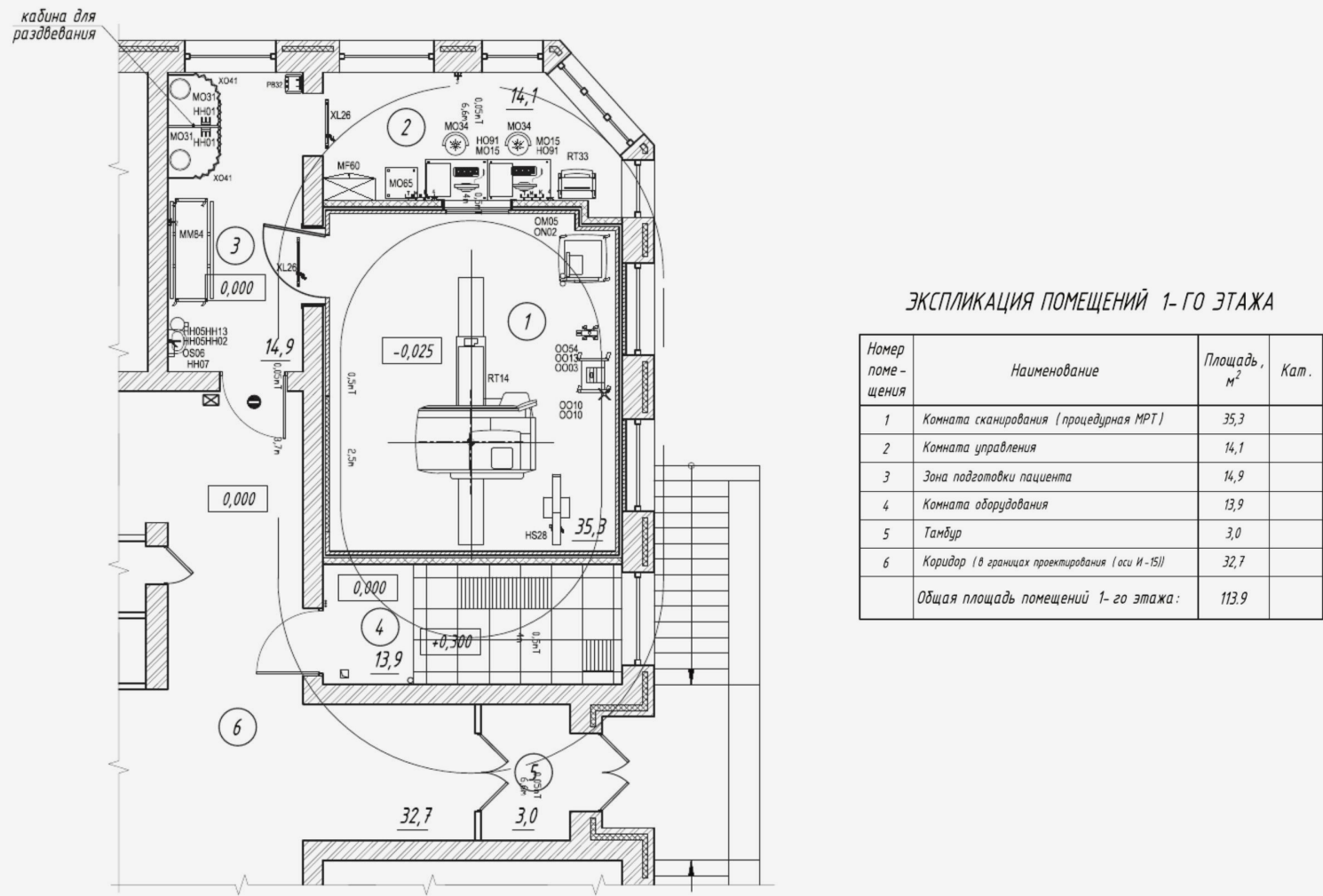
Multidisciplinary medical center of «Medial» LLC



Izmailovsky Consulting and Diagnostic Center. Division Federal State Budgetary Institution «N.I. Pirogov National Medical and Surgical Center» of the Ministry of Health of the Russian Federation



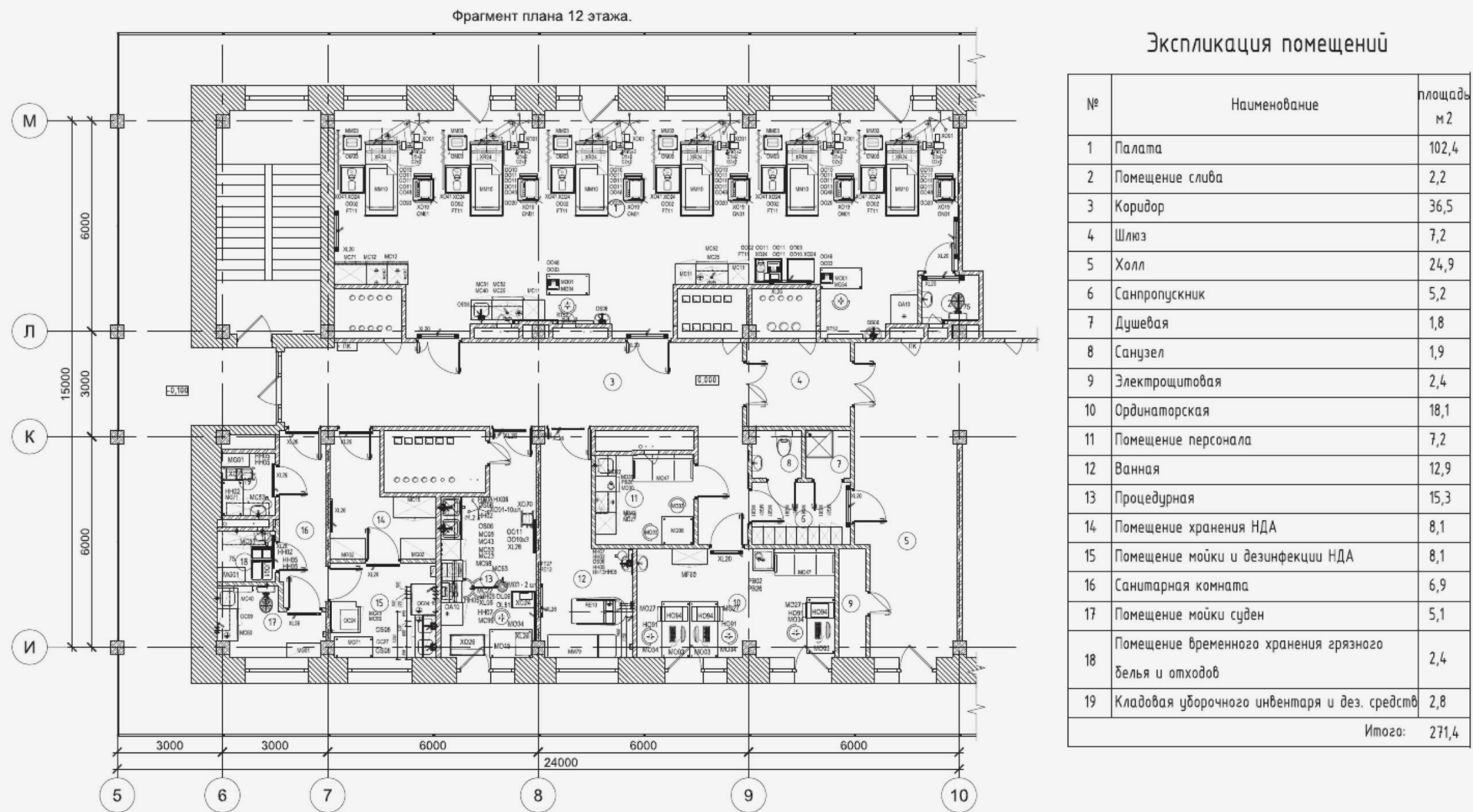
Lukhovitskaya Central District Hospital (Moscow region). Treatment room



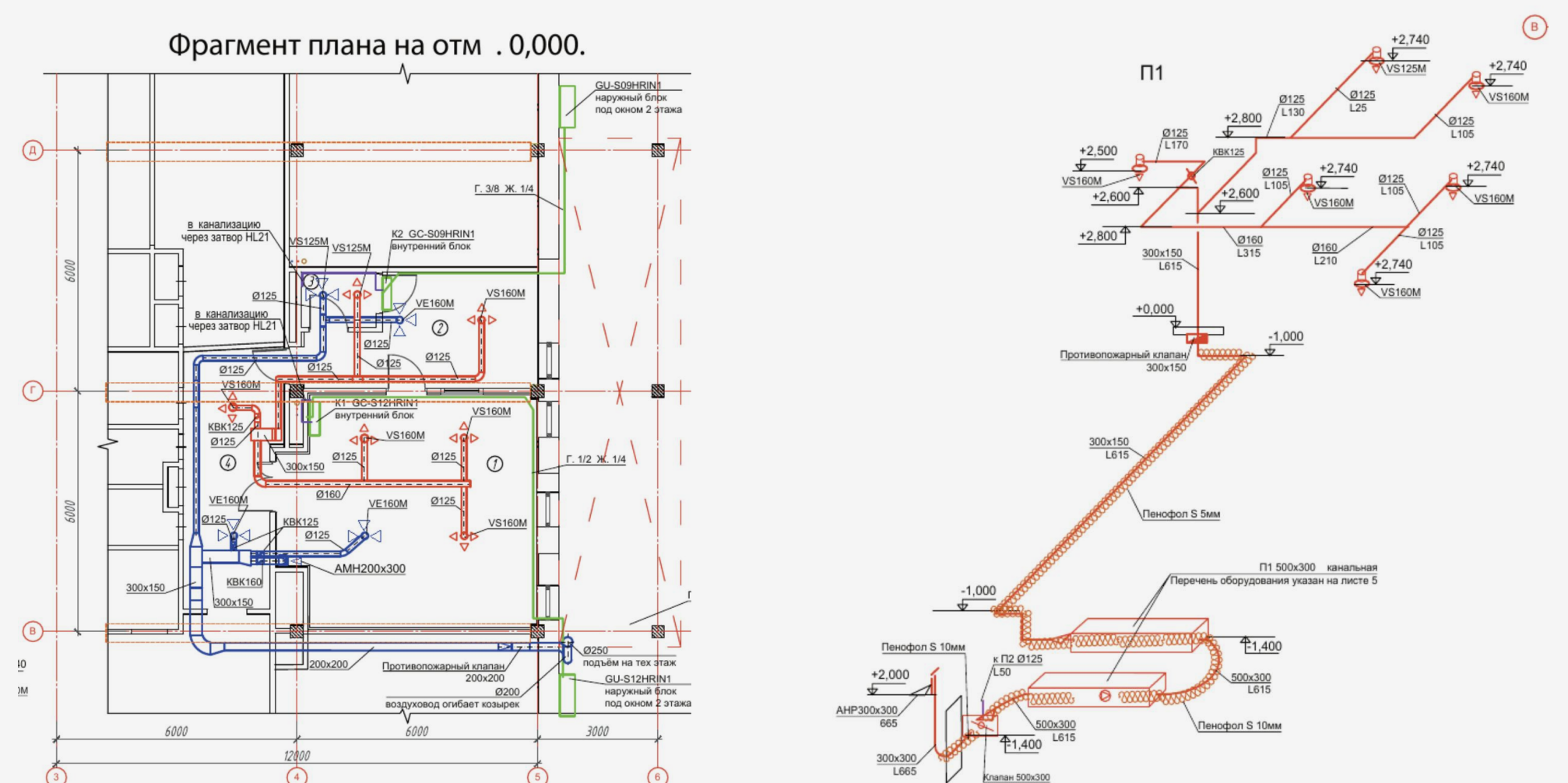
Branch of the All-Russian Center for Emergency and Radiation Medicine
named after the Ministry of Emergency Situations of Russia



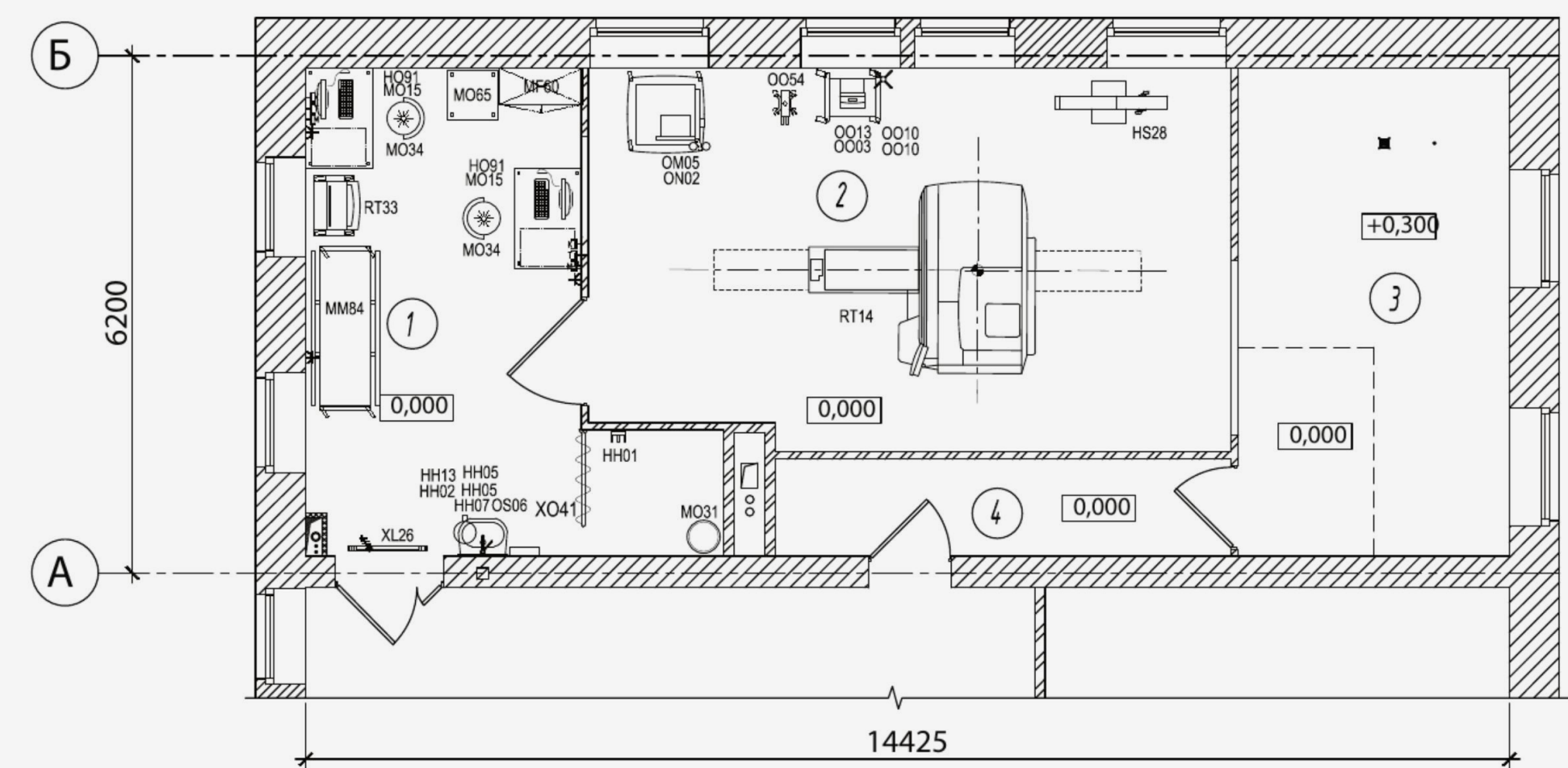
Zhukovsky Regional Clinical Hospital (Moscow region). Intensive care unit on the 12th floor



Elektrostal Central City Hospital (Moscow region). Treatment room



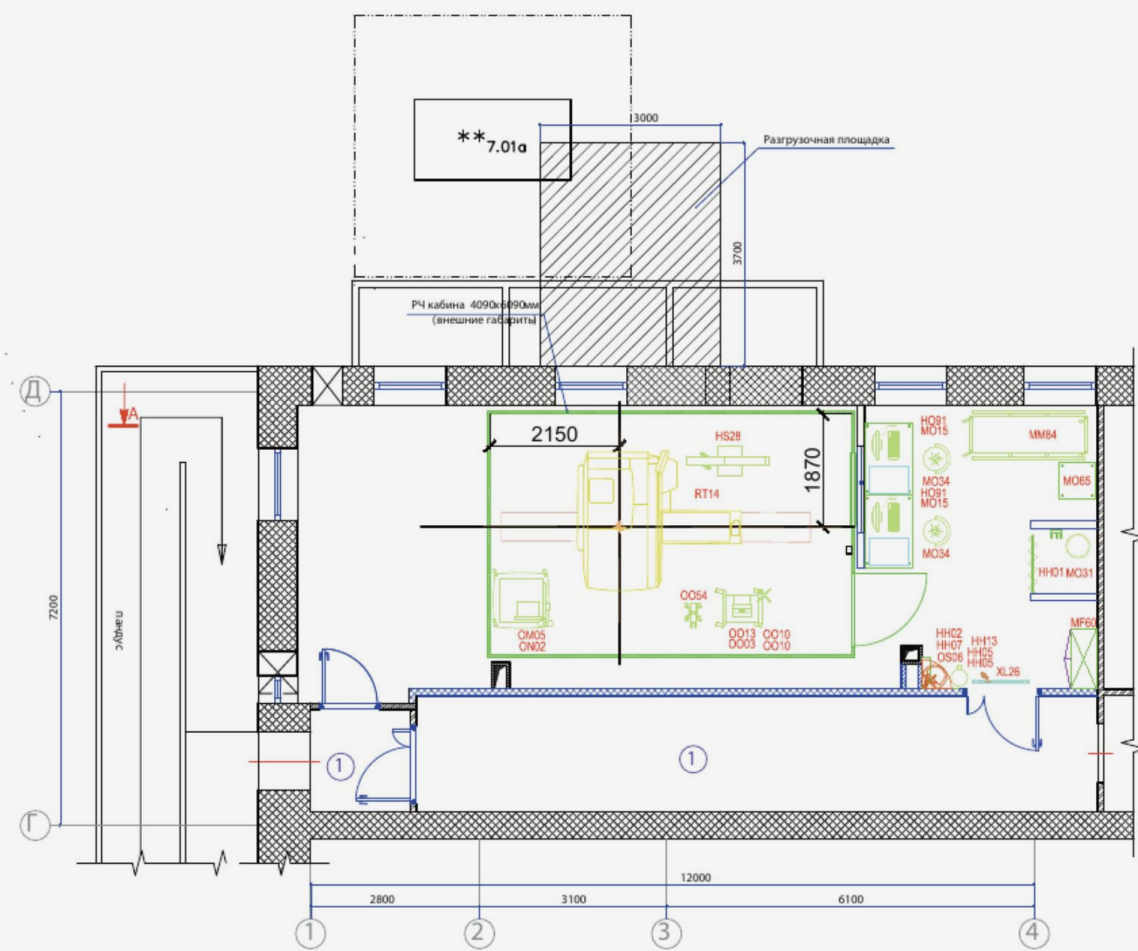
Vidnovskaya Regional Clinical Hospital (Moscow region). Treatment room



Primary admission clinic for adults and children of JSC GC «Medsi». Moscow

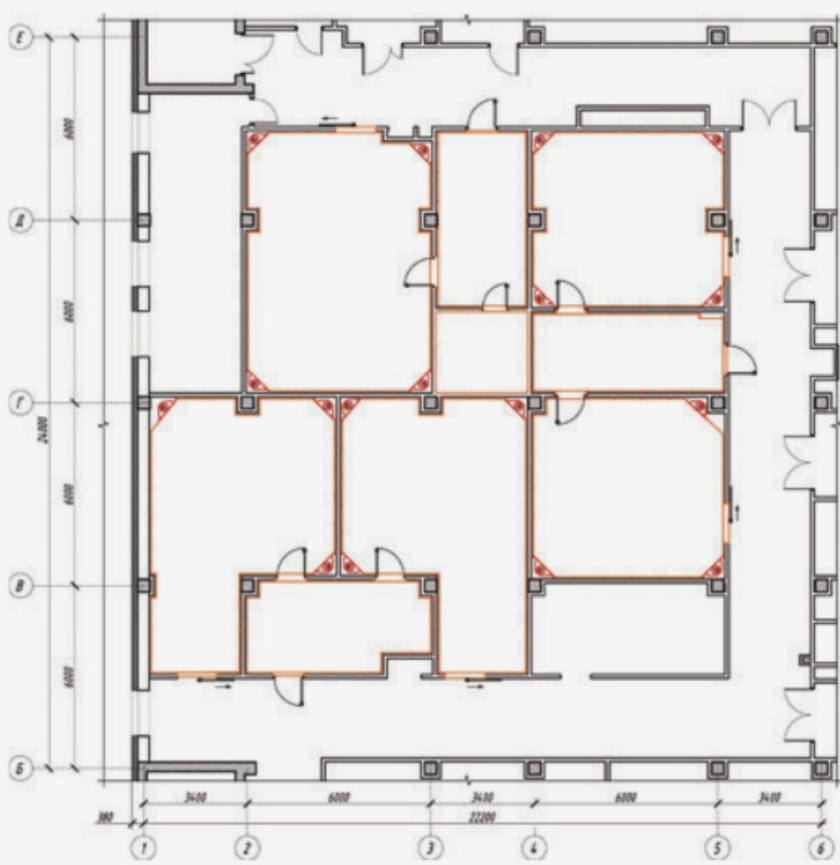


Podolsk Regional Hospital (Moscow region). Treatment room on the 1st floor



| Экспликация помещений | | | | | | | | | | |
|-----------------------|-------------------------------|------------|----------|-------------------|-------------------------------------|--------------------|----------------------------------|----------------------------------|-----|--|
| Номер помещ. | Наименование | Площадь м2 | Высота м | Отделка | | | Количество воздухообмена | | Т°С | |
| | | | | Полы | Потолок | Стены и перегород. | Приток | Вытяжка | | |
| 1 | Коридор | 24,67 | 3,10 | Линолеум | Подвесной потолок на высоте + 2,8 м | Акриловая окраска | - | - | +20 | |
| 2 | Техническая комната | 15,54 | 3,10 | Акриловая окраска | Бетон, окраска | Акриловая окраска | 100% увеличение теплообитаемости | 100% увеличение теплообитаемости | +18 | |
| 3 | Процедурная МРТ | 28,89 | 3,10 | Бетон, окраска | Бетон, окраска | Акриловая окраска | 100% увеличение теплообитаемости | 100% увеличение теплообитаемости | +21 | |
| 4 | Комната управления | 8,79 | 3,10 | Акриловая окраска | Подвесной потолок на высоте + 2,8 м | Акриловая окраска | +3 | -4 | +18 | |
| 5 | Помещение подготовки пациента | 5,82 | 3,10 | Линолеум | Подвесной потолок на высоте + 2,8 м | Акриловая окраска | +3 | - | +20 | |
| 6 | Кабина для раздевания | 2,24 | 3,10 | Линолеум | Подвесной потолок на высоте + 2,8 м | Акриловая окраска | +3 | -3 | +21 | |

The surgical building of the Republican Hospital.
Tskhinvali Republican Hospital, Republic of South Ossetial



Service and repair.

Advantages

High quality standards

Our service and repair engineers and technicians are highly qualified, undergo training in service maintenance at training centers and factories of leading global manufacturers, and hold the appropriate certifications. The service team consists of 44 employees.

Own equipped service center

Our fully equipped service center and spare parts warehouse enable us to perform repairs on high-tech equipment of any complexity.

mpamed.ru/servis-i-remont



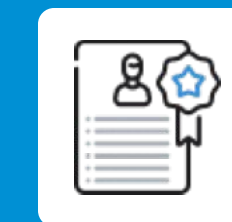
Own repair shop
in Russia



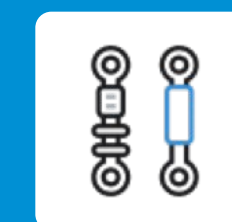
High quality
of work performed



Tight repair
deadlines



Years of experience
and professionalism



Availability of spare
parts in stock



Acceptable
price

Areas of activity.

Service and repair



We provide comprehensive maintenance of medical equipment in the warranty and post-warranty period.

Our own equipped service center and spare parts warehouse allows us to repair high-tech equipment of any degree of complexity, and the company's staffed staff provides high-quality service services promptly for 365 days a year.

Areas of activity

- Comprehensive maintenance of medical equipment;
- Repair of rigid endoscopes;
- Repair of flexible endoscopes;
- Repair an ultrasound transducers;
- Maintenance of da Vinci surgical systems.

Service and repair.

Authorized partners



INTUITIVE™

bk medical 
a GE Healthcare company

Medtronic

STORZ MEDICAL

PENTAX

STORZ
KARL STORZ — ENDOSKOPE



Canon

Dräger

SIEMENS

PHILIPS

HOLOGIC®

Service and repair.

Comprehensive maintenance



Periodic monitoring of the technical condition of medical devices is carried out in accordance with routine maintenance, agreed with the Customer.

If necessary, we instruct the medical staff on user functions. Scheduled maintenance work is carried out in accordance with the maintenance schedule agreed with the Customer. A set of works in accordance with the letter of the Ministry of Health of the Russian Federation dated 27.10.2003 No. 293-22/233.

Areas of activity:

- Works recommended by the manufacturer of medical equipment products
- Replacement of materials maintenance kit
- Non-scheduled visit (routine maintenance, fault diagnosis)
- Maintenance logging



Warranty
for the completed work –
6 months



Free diagnostics



A prerequisite for the provision
of the service is the conclusion
of a long-term contract



The cost is calculated based
on the list of medical devices

Areas of activity.

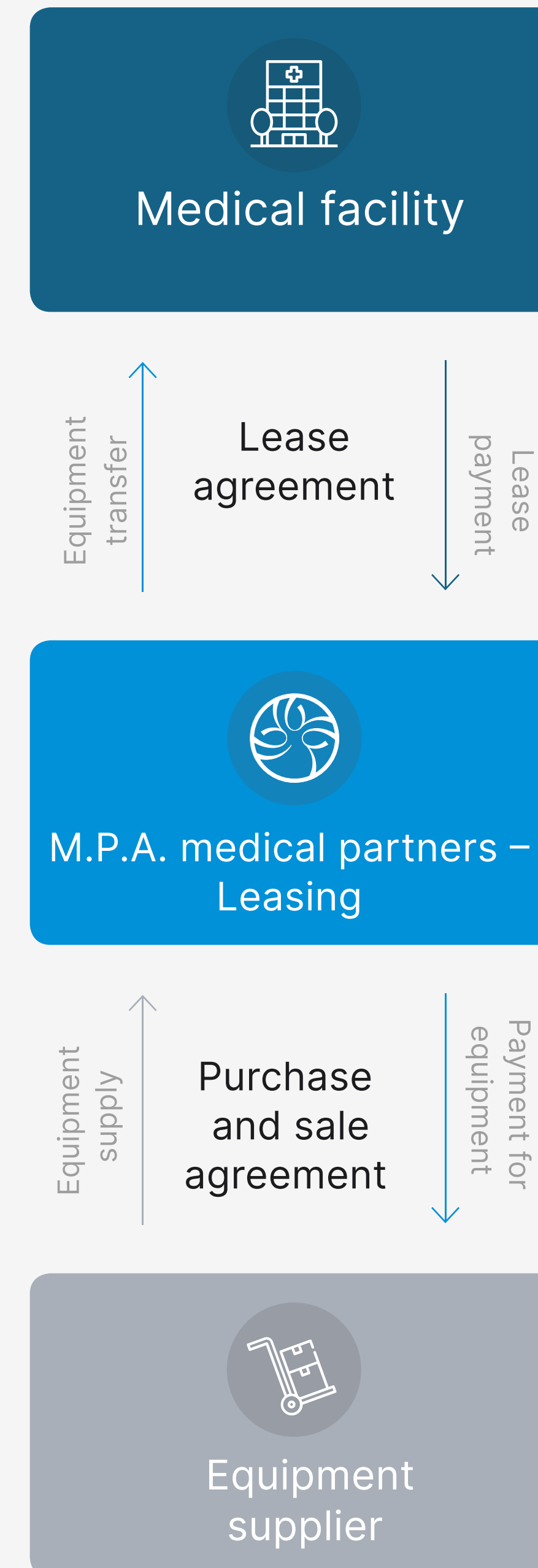
Leasing

High-quality medical equipment is necessary for any medical institution to work. It is not always possible for clinics to immediately allocate a large budget for this purpose.

The use of the leasing mechanism allows us to offer our patients the most modern and advanced treatment methods without significant investment.

«M.P.A. medical partners – Leasing» — is a highly specialized company that provides medical equipment for leasing

 mpamed.ru/lizing



Areas of activity.

Demonstration and training center

In 2021, a demonstration and training center of the company «M.P.A. Medical Partners» was opened in Moscow.

The center offers the opportunity to learn about the latest technologies and undergo training on the equipment.

The training center hosts master classes and broadcasts.



Training on the robot-assisted system da Vinci Xi using simulations, training models; demonstration training sessions



Demonstration of BK Medical ultrasound systems. Workshops on working with specialized ultrasound equipment.



Demonstration of the «Clean Room» technology used in operating rooms and intensive care units.

Areas of activity.

Digital solutions



Digital solutions for healthcare are transforming all aspects of the system – from patient care to the management of medical institutions.

Software distribution:

- **MUSE (GE Healthcare)** Information Cardiological System for collecting, storing, and analyzing data
- **Edison (GE Healthcare)** platform for managing patient data, images and medical content
- **ICCA (Phillips)** Information System for Anesthesiology, Resuscitation, and Intensive Care (AIRI)

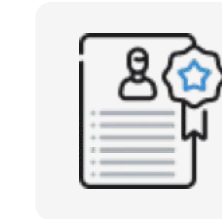
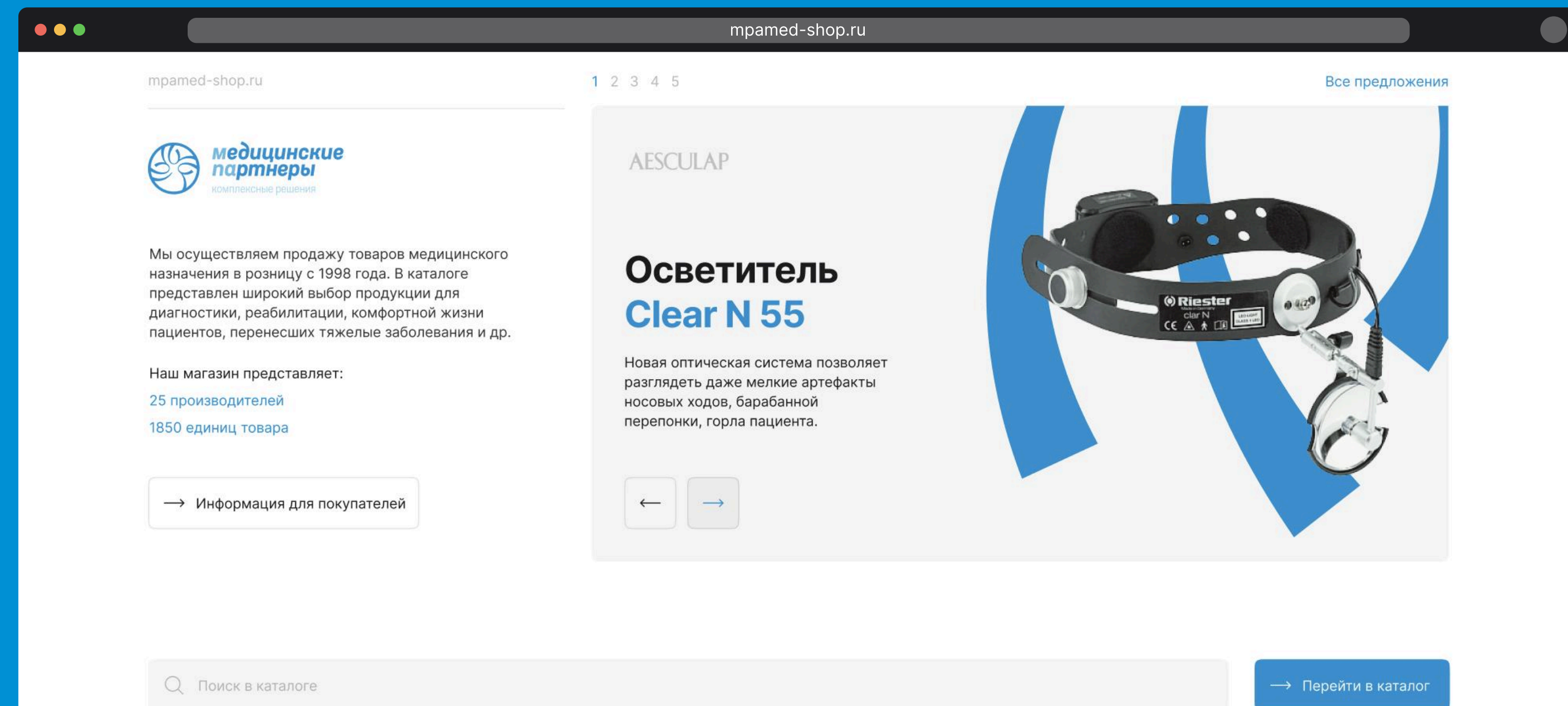


Areas of activity.

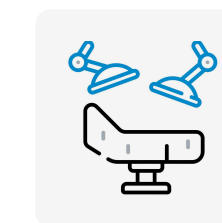
Online Store

The online store has been selling medical products retail since 2012.

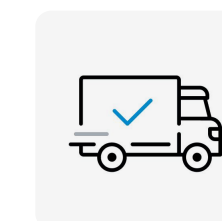
The catalog offers a wide range of products for diagnostics, rehabilitation, and the comfortable life of individuals who have recovered from serious illnesses, among others. All products are certified and suitable for home or professional use.



We are official distributors of leading global equipment manufacturers



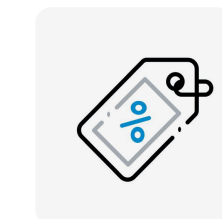
High-quality equipment: we select only the best for sale



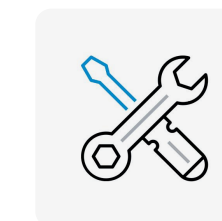
Various payment options and timely delivery across Russia



Knowledgeable specialists are always available to provide advice and help choose the necessary products.



Flexible pricing policy, promotions and discounts allow you to fit within different budgets and save on purchases.



If a defect is found in a purchased product, our service team will carry out the repair



The option to pay for rehabilitation equipment with an electronic certificate

Areas of activity.

Comprehensive promotion

Design

Logo and brand identity development

Photo and Video

Promotional and training videos, photos of clinic doctors

Website Creation

Design, development, search engine optimization

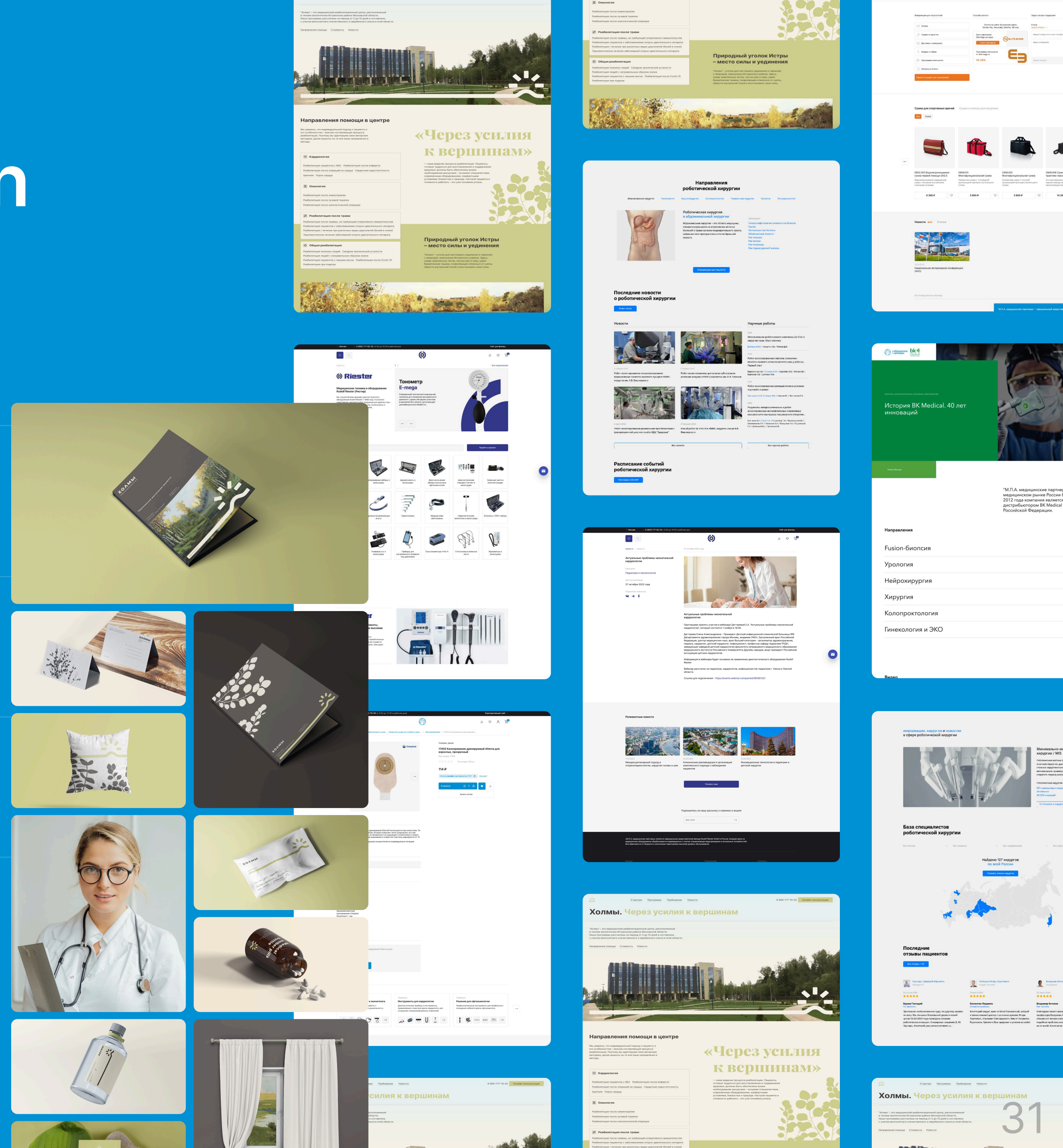
Content Marketing

Social media management, copywriting

Printing

Promotional products and printing services

 mpamed.ru/o-kompanii



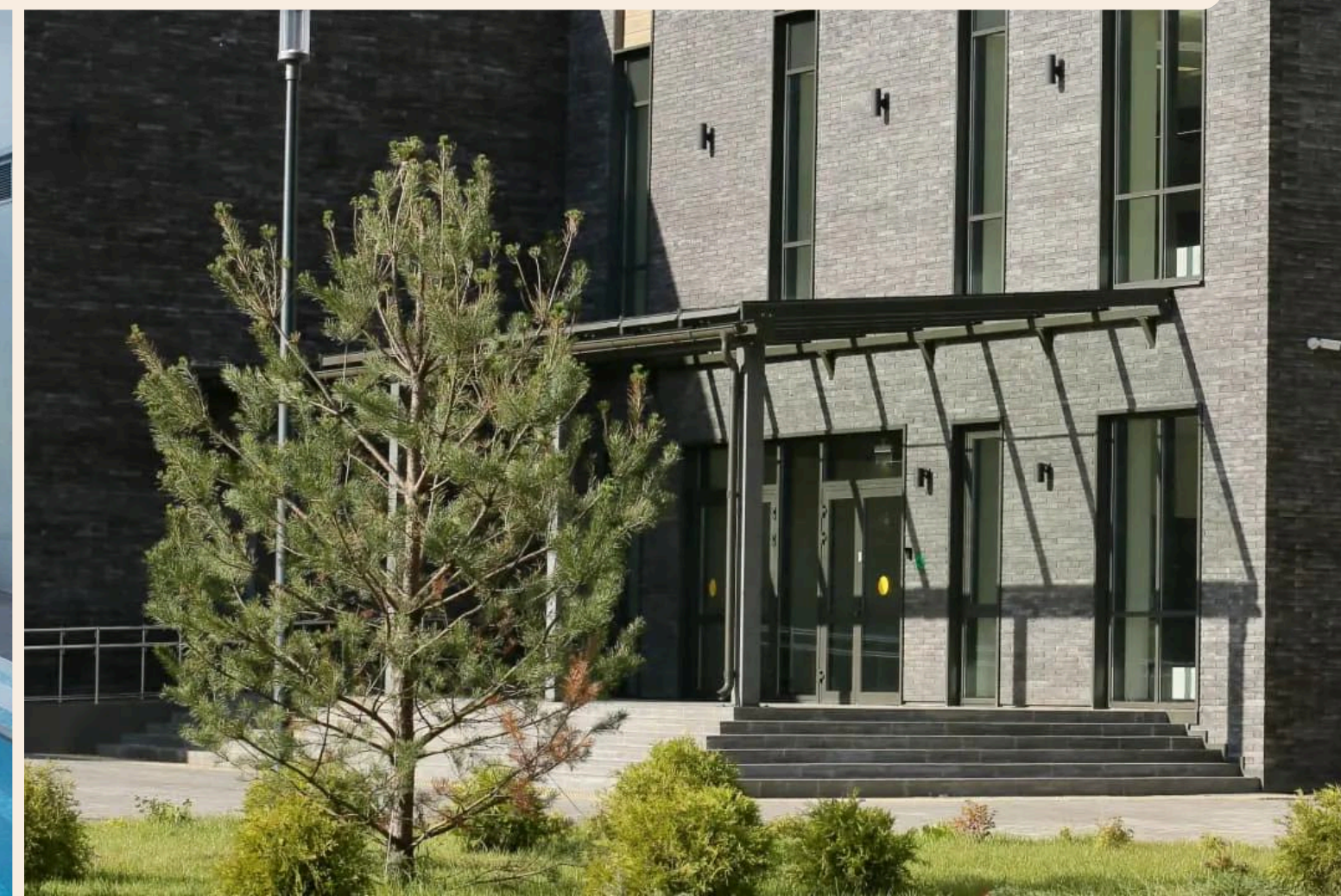


holmy-rehab.ru

ХОЛМЫ

реабилитационный
центр

Rehabilitation at the medical center «Holmy»



Rehabilitation

Recovery and rehabilitation after illnesses or injuries.
An individual approach to rehabilitation is the cornerstone
of our philosophy and the key to your successful recovery



Outpatient Services

Consultations with specialized professionals and
outpatient treatment. Modern equipment and recovery
methods based on evidence-based medicine principles

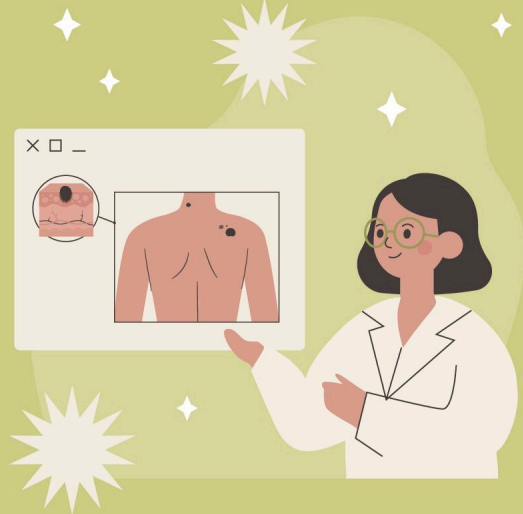


Center Infrastructure

The MRC "Holmy" can accommodate 62 patients
undergoing rehabilitation simultaneously,
with 45 spacious single and double rooms available

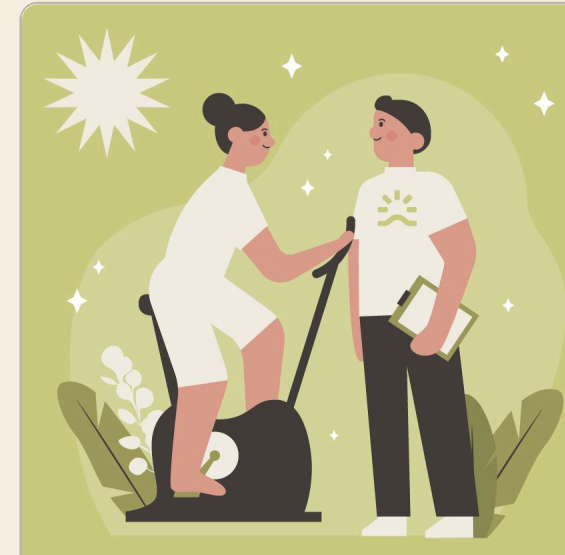


Areas of assistance at the Center



Oncological rehabilitation

Includes individual recovery programs at all stages of treatment, covering the diagnosis and treatment of malignant tumors in various organs and systems



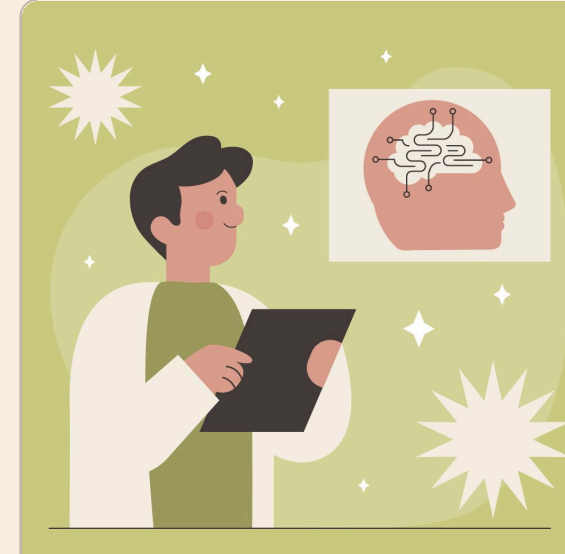
Musculoskeletal system

Covers recovery after fractures, osteosynthesis surgeries, arthroscopy, and joint replacement, as well as the treatment of back pain, osteoarthritis and arthritis



Cardiac rehabilitation

It is aimed at the recovery of patients with cardiovascular diseases and after cardiac interventions, as well as those with myocardial infarction, hypercholesterolemia and high blood pressure



Neurology

Aimed at restoring nervous system functions in patients with multiple sclerosis, after traumatic brain injury, or stroke



Other areas of assistance

- General rehabilitation, rehabilitation for elderly patients, weight loss support
- Program for the senior generation
- Weight loss program at the clinic

«Through effort to the peaks»

- our vision of the rehabilitation process. Patients working towards recovery are provided with everything they need — the best specialists, equipment, and nature. The patient's mindset and readiness to work are already half of the success!

**Thank you
for your attention!**